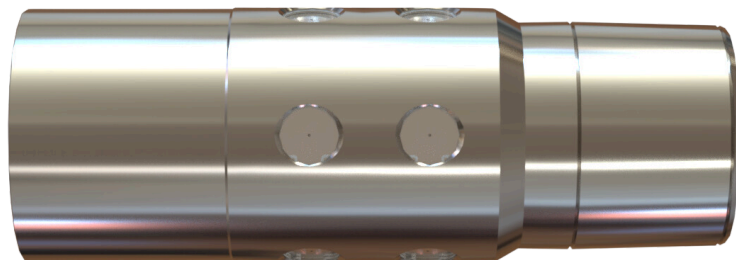


SLIMHOLE

TOE INITIATION SUB



OVERVIEW

The Slimhole Toe Initiation Sub is a simple, differential pressure activated toe port that uses burst disks designed and manufactured by Interra Energy. The compact design of the disks allows for a reduced outside diameter (OD) while maximizing inside diameter (ID).

The Slimhole Sub eliminates the use of coiled tubing or tubing-conveyed perforating for pumping down perforating guns for the first stage of plug-and-perf operations. After establishing communication, the Slimhole Toe Initiation Sub can also be used to stimulate the formation for the first treatment stage.

OPERATION

The Slimhole Sub is installed near the toe of the well as part of the casing string during the completion process. The tool can be run in a cemented or open hole completion.

Pressure is increased to the pre-calculated activation pressure, which immediately opens the tool providing flow injection into the formation.

SPECIFICATIONS

Slimhole						
OD in / mm	Weight		OD		Sleeve ID	
	lb/ft	kg/m	in	mm	in	mm
4.5 / 114.3	11.6-15.1	17.26-22.47	5.250	133.35	3.960	100.58
5.0 / 127.0	21.4-24.1	31.85-35.86	5.625	142.88	4.000	101.60
5.5 / 139.7	17.0-23.0	25.30-34.23	6.375	161.93	4.900	124.46

FEATURES & BENEFITS

- No moving parts.
- Full wellbore ID.
- Small OD suitable for slimhole applications.
- Multiple burst disks for redundancy and increased flow area.
- Burst disks available in 500 psi (3.5 MPa) increments.
- Acid dissolvable burst disks available.
- Differential pressure activation prevents accidental tool function during cementing operations.
- Compatible with all industry wiper plugs.
- Activation pressure can be configured to reservoir and customer requirements.
- Optional ball seat configuration to pressure test production casing.
- Compact tool length eliminates the need for pup joints.